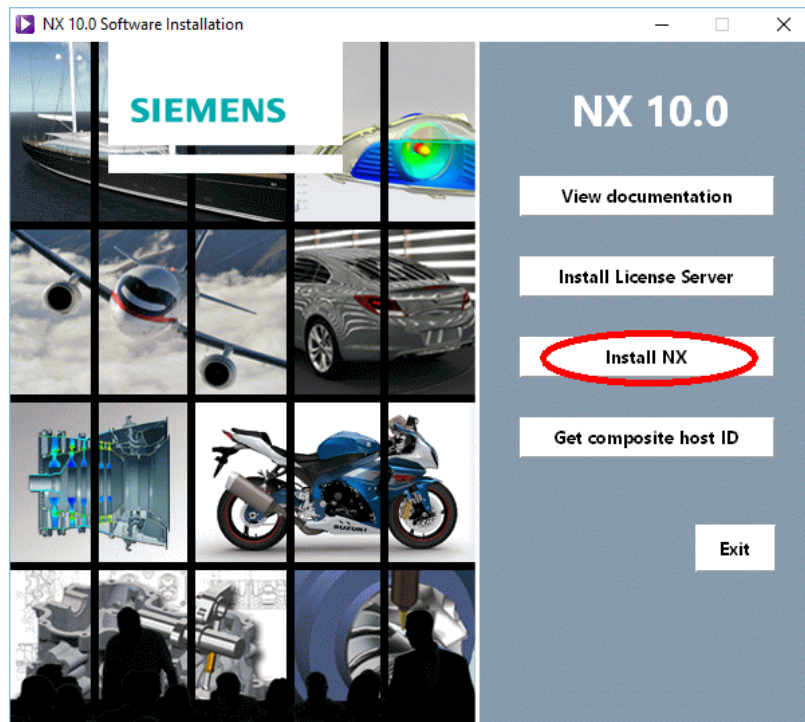


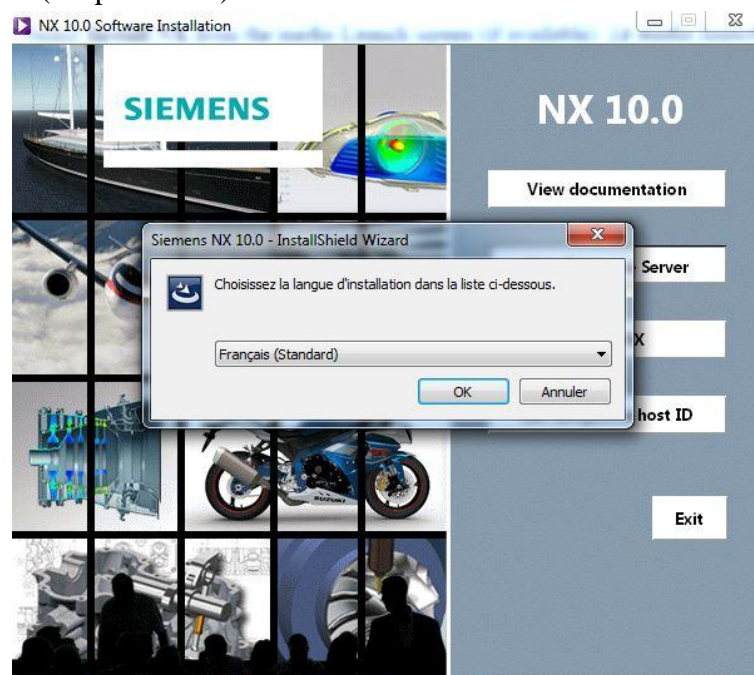
# Installation guide for Windows 64

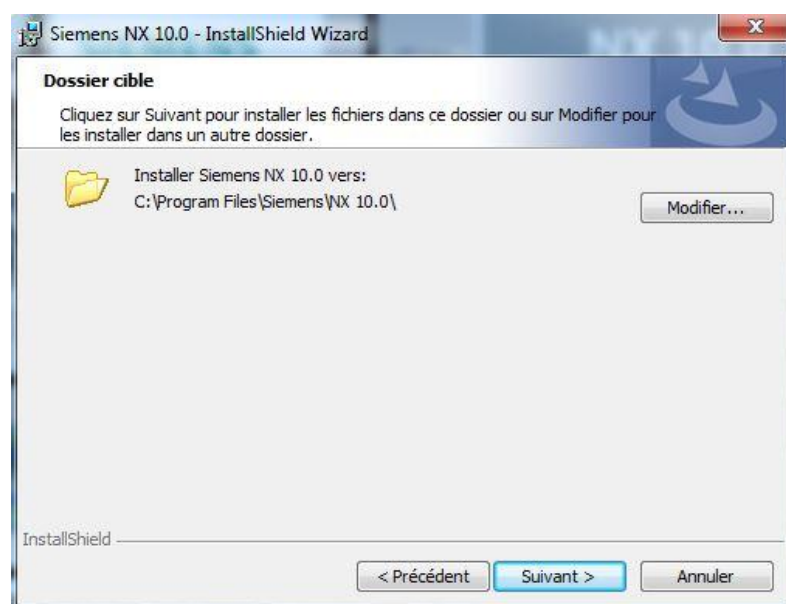
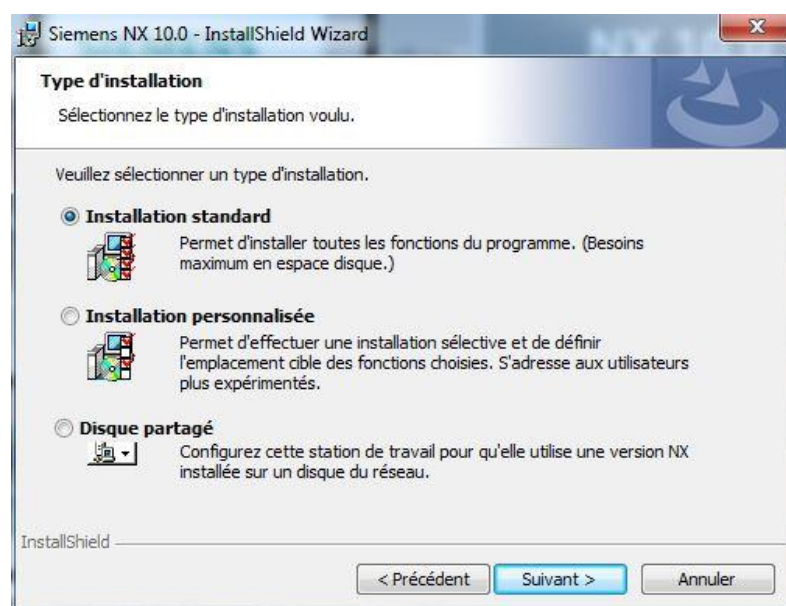
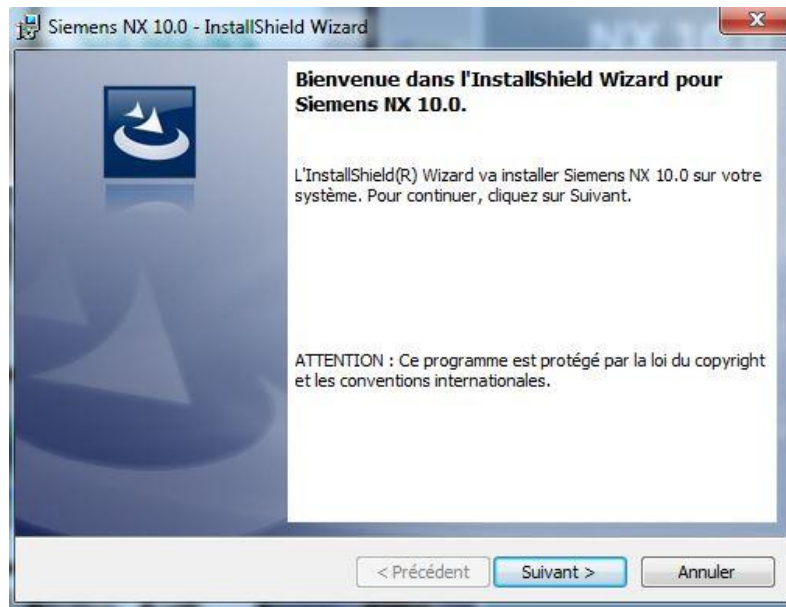
## Siemens NX installation

1. Unzip the file *nx-12.0.0.zip*
2. Start the NX Installation program: *launch.exe*
3. Select "Install NX" (do not install the license server!)

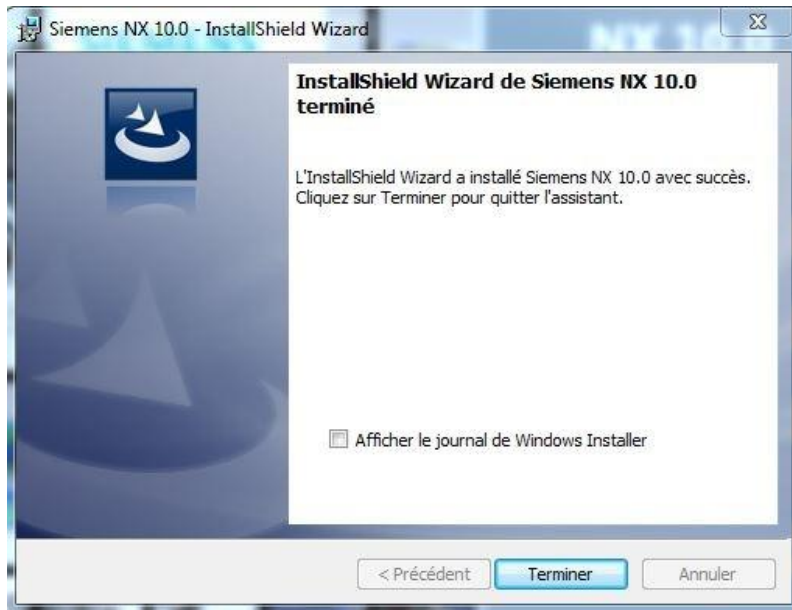


4. Follow the instruction (keep defaults).





Installation guide from the A&M Wiki and the ULg's VPN web page (SEGI).  
Leblanc Christophe.



## VPN Tunnelling Application Installation

In order to access the licence server from outside ULg's network, the "VPN Tunneling Application" has to be used.

1. Go to the bottom of the webpage: [https://www.ulg.ac.be/cms/c\\_54680/fr/service-vpn](https://www.ulg.ac.be/cms/c_54680/fr/service-vpn) and download the "Pulse Secure" VPN client for Microsoft 64 bits (ULg link).

Or use this direct link: [http://www.ulg.ac.be/cms/c\\_8091033/fr/pulse-secure-win64-ulg](http://www.ulg.ac.be/cms/c_8091033/fr/pulse-secure-win64-ulg)

Vous pouvez également télécharger le client lourd via les liens suivants :

Client VPN "Network Connect" :

- OS X (Mac) versions antérieures à 10.9

Client VPN "Pulse Secure" préconfiguré :

- Microsoft Windows 32 bits : [ULg](#), [CHU](#)
- Microsoft Windows 64 bits : [ULg](#), [CHU](#)
- OS X (Mac) versions 10.9 à 10.12 : [ULg](#), [CHU](#)
- Linux RedHat (CentOS) : [ULg](#), [CHU](#)
- Linux Debian (Ubuntu) : [ULg](#), [CHU](#)

Client VPN "Pulse Secure" de base :


- Microsoft Windows 32 bits
- Microsoft Windows 64 bits
- OS X (Mac) versions 10.9 à 10.12
- Linux RedHat (CentOS)
- Linux Debian (Ubuntu)
- Windows Phone : [Windows Store](#)
- IOS versions 8.0 et ultérieurs : [Apple Store](#)
- Android versions 4.0 et ultérieurs : [Google Store](#)

**Aide**

Si vous éprouvez des difficultés à utiliser le VPN de l'ULg, n'hésitez pas à consulter [votre UDI](#) qui pourra vous y aider.

---

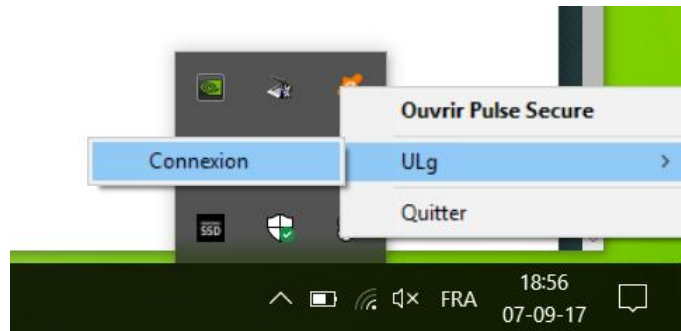
**Contact(s) :** [SEGI](#)

Page mise à jour le 2016-11-30 Version imprimable 

[Contacts généraux](#) | [A propos du site](#) | [Mentions légales](#) | [Plan du site](#)

Installation guide from the A&M Wiki and the ULg's VPN web page (SEGI).  
Leblanc Christophe.

2. Install the application (keep the default options).
3. Run the application: in your start menu, right-click on the new icon “Pulse Secure” → ULg → Connexion.



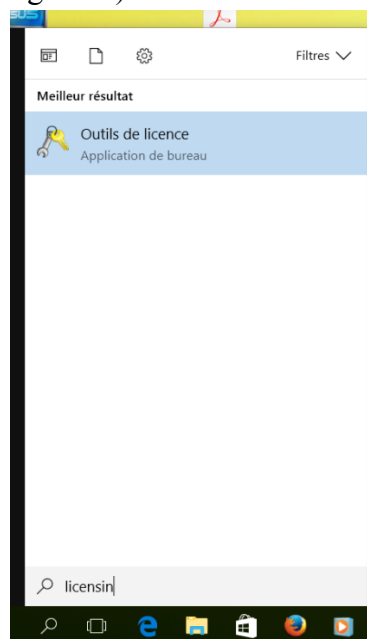
4. In the “Pulse Secure” dialog box, enter your student number and your password and click “Connexion” (**internet connection required**).



5. You are connected to the tunnelling application.

## Managing the license

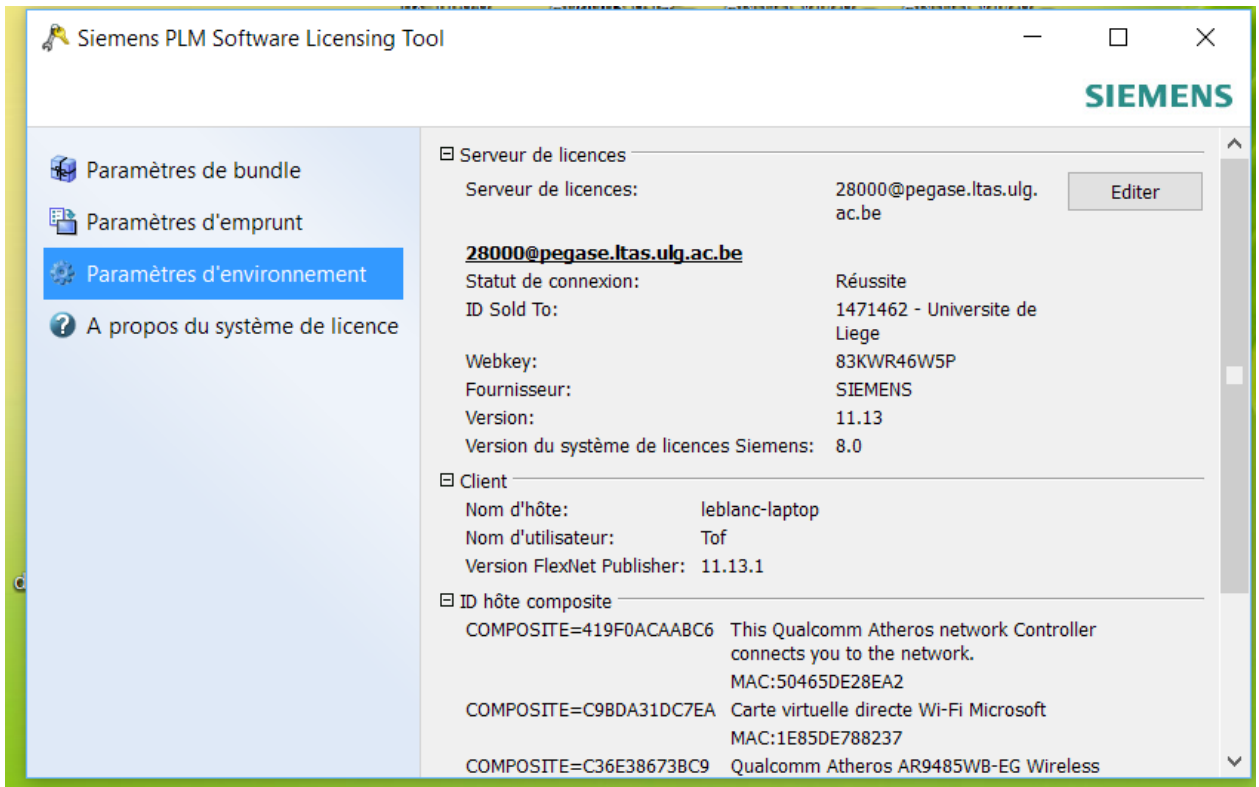
1. Open “Outil de licence” (or “Licensing tool”).



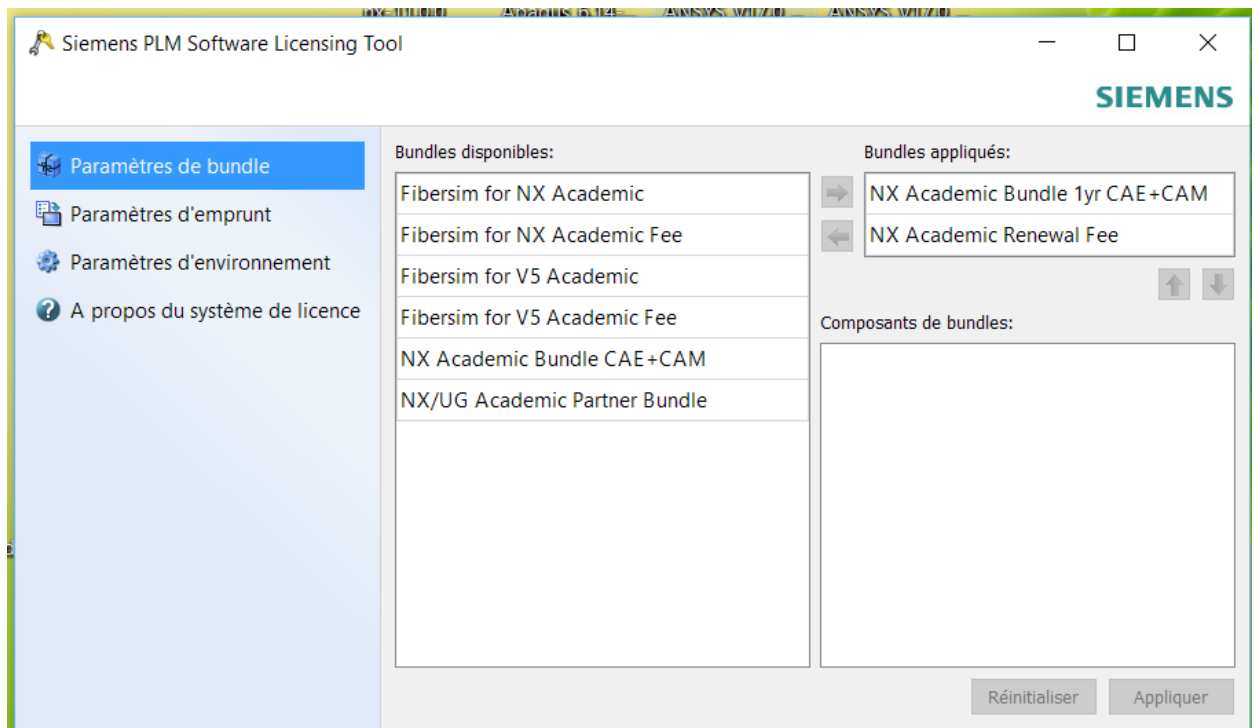
2. In the “Siemens PLM Software Licensing Tool” dialog box, click on the environment parameters and set the license server (click edit) to:

[28000@pegase.ltas.ulg.ac.be](mailto:28000@pegase.ltas.ulg.ac.be)

Installation guide from the A&M Wiki and the ULg’s VPN web page (SEGI).  
Leblanc Christophe.



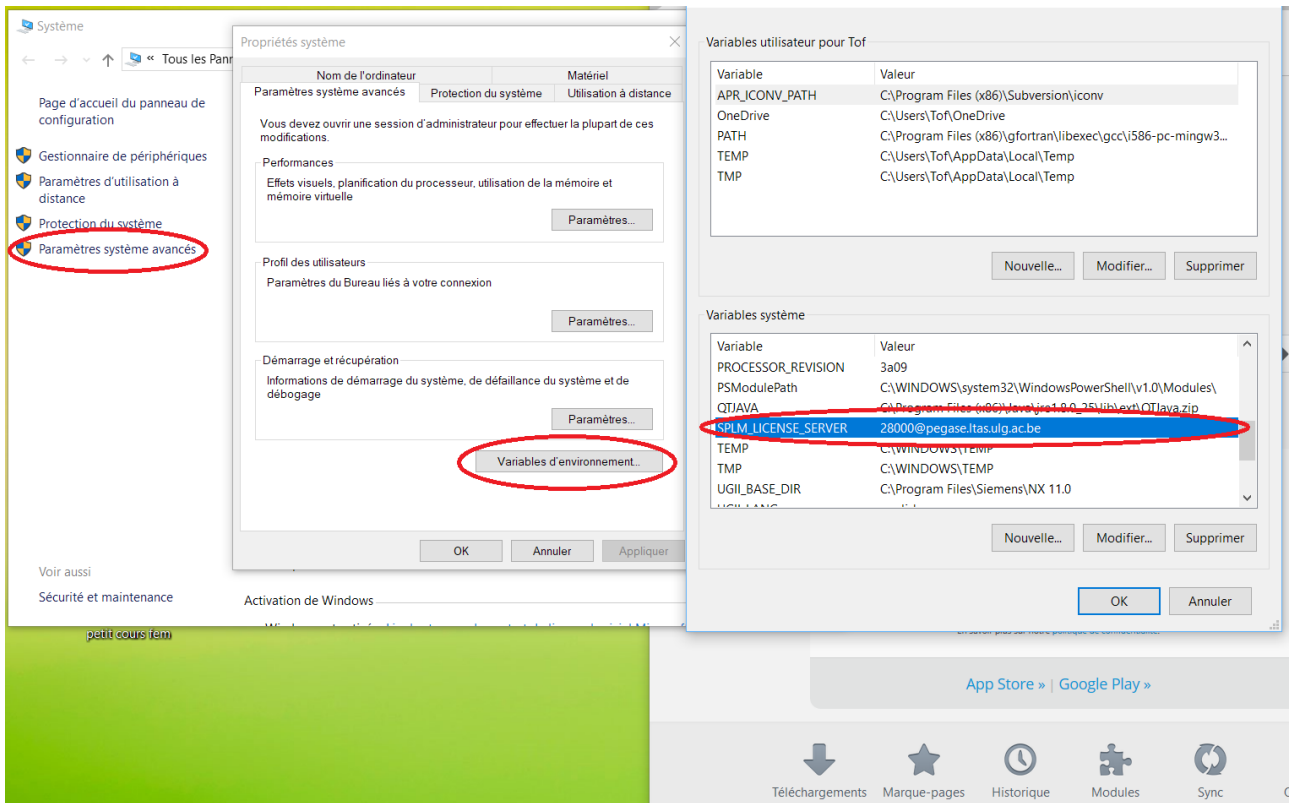
- Go to the bundle parameters and select as bundles to apply:
  - “NX Academic Bundle 1yr CAE+CAM”
  - “NX Academic Renewal Fee”



- Close the window “Apply/Appliquer”.
- You should be able to run Siemens NX 11.

Installation guide from the A&M Wiki and the ULg’s VPN web page (SEGI).  
Leblanc Christophe.

6. Check if the *SPLM\_LICENSE\_SERVER* environment variable is set to [28000@pegase.ltas.ulg.ac.be](mailto:28000@pegase.ltas.ulg.ac.be).



Installation guide from the A&M Wiki and the ULg's VPN web page (SEGI).  
Leblanc Christophe.